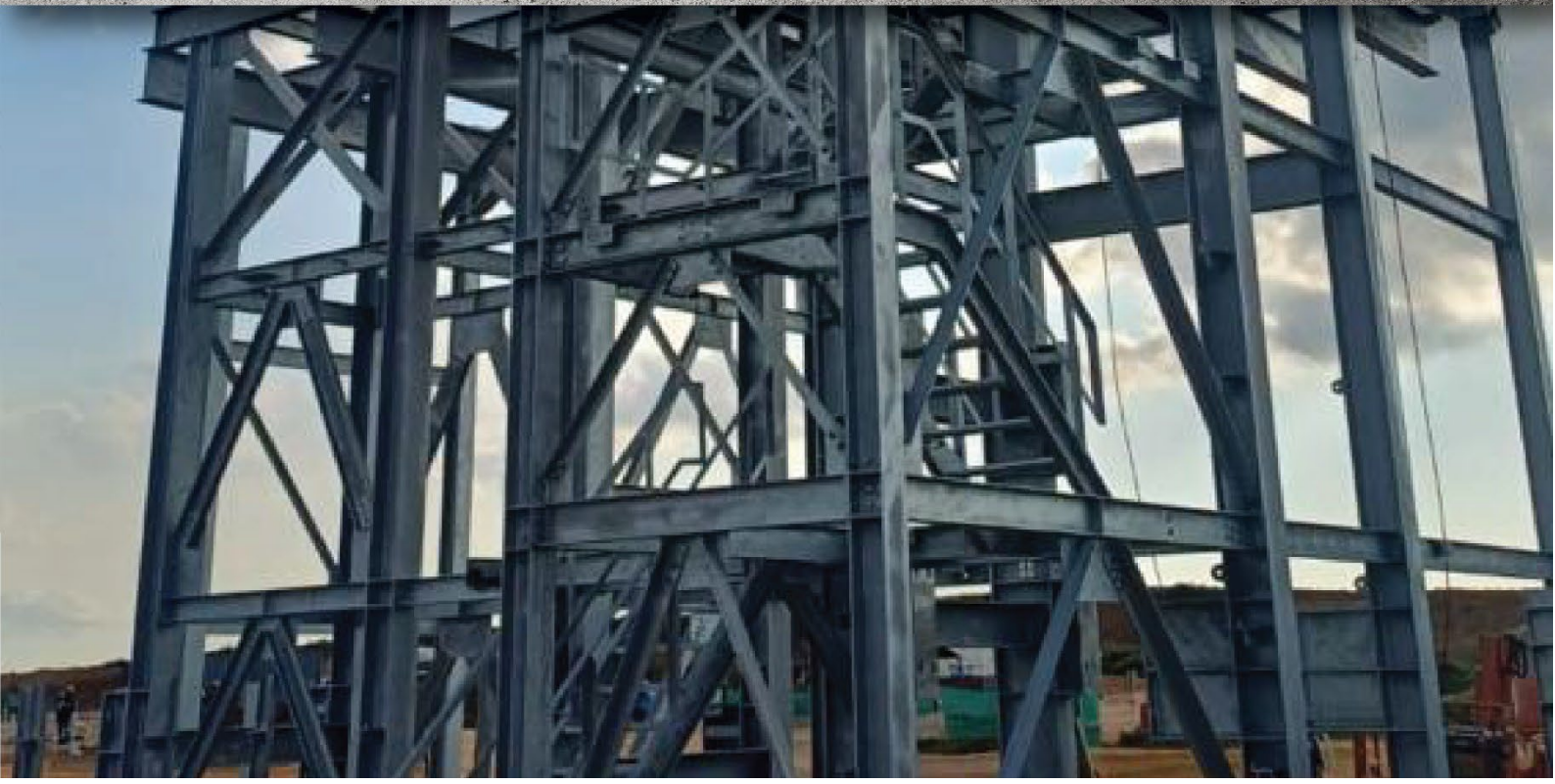




**LINING &
CONSTRUCTION**
CONSTRUCTING THE FUTURE






COMPANY PROFILE





**BUILDING FOUNDATIONS
TODAY TO CONSTRUCT THE
FUTURE OF TOMORROW.**

TABLE OF CONTENT

	Company Introduction	03
	Vision	06
	Mission	07
	Values	08
	Turnkey Projects	09
	Product offering	13
	Fabrication	
	Erection of steelwork	
	Professional Project Management	
	Safety and Quality Control	
	Civil Construction	
	Rubberlinng & Conveyor Belting	
	Sandblasting & Corrosion Protection	
	Profile Cutting	
	Conclusion	29



J & L Lining and Construction founded by Leon de Wet in 1997, offers the industry a 27-year track record in:

- **Turnkey Projects**
- **Fabrication**
- **Erection of steelwork**
- **Green Field & Brown Field Projects**
- **Professional Project Management**
- **Safety and Quality Control**
- **Civil Construction**
- **Rubber lining**
- **Sandblasting & Corrosion Protection**
- **Profile Cutting**

Over the years we have Evolved into a Dynamic Force, Fuelled by Passion & Driven by Innovation.

Under the Leadership of the Second-Generation de Wet brothers James & Leon, a Unique & Extraordinary Family-Based Business has witnessed steady and sustainable growth, expanding the Business Footprint across South-Africa & Neighbouring Countries.



Backed by a legacy of excellence, we offer our customers an unwavering commitment to:

05

- ⦿ Exceptional Service Delivery**
- ⦿ Quality Assurance**
- ⦿ Zero Tolerance Approach To Safety**
- ⦿ Excellent communication**
- ⦿ Understanding our Customer's Needs and Requirements**
- ⦿ Data Analysis and Management**
- ⦿ Have a Positive Overall Experience Doing Business with J&L Lining**

Keeping you, the customer, involved and in charge every step of the way, maximising safety and ensuring cost-effectiveness. Our technical and management team keeps our customers involved.

Engaging with our customer's management team on every level, from planning, quality management, shop detailing, fabrication, corrosion protection, delivery, and installation, up until final completion.

At J & L Lining and Construction, you will experience the power of precision, the dynamic of innovation and a legacy of reliability. Leaving you as our customer satisfied with our Service delivered.

Our dedicated team is committed by a shared understanding and acceptance of our company VISION, powered by our MISSION, and driven by our business VALUES.

OUR VISION

To provide service excellence, through innovation, quality workmanship and safety. Ensuring we delivery cost effectiveness in meeting and exceeding our customer's expectations.



OUR MISSION

07

Our mission at J & L Lining and Construction is to provide:

FOR OUR CUSTOMERS

Uncompromising service delivery, cost-effectiveness and world class quality products.

FOR OUR EMPLOYEES

Sustainable and fore filling employment, developing an environment of learning.

FOR OUR COMMUNITY

Development of skills and upliftment through employment and learnership.

FOR OUR SHAREHOLDERS

Sustainable return on investment and long term business development.

OUR VALUES

08

SAFETY

We are our brothers keeper, continuously striving to improve our safety standards and adopting best practices.

INTEGRITY

We conduct our business with the highest level of integrity, building trust and respect with our clients, employees, suppliers and local communities.

INNOVATION

Embracing innovative thinking through creating a culture of continuous improvement and encouraging free-thinking in problem solving.

EMPOWERMENT

We believe in empowering our people to do their job with passion, embracing growth and prosperity at every level.

ENVIRONMENTAL RESPONSIBILITY

We acknowledge we have a responsibility to the environment and are committed to sustainable practices, considering the impact our manufacturing processes might have. Seeking eco-friendly solutions where possible.

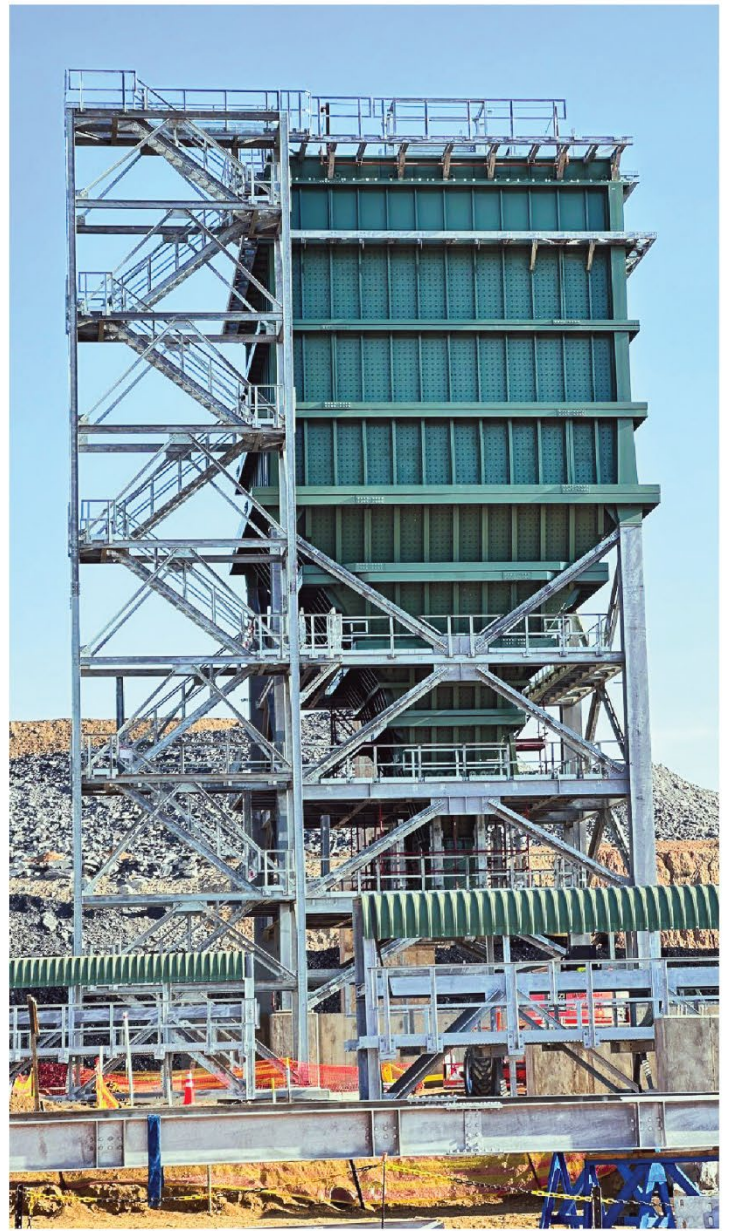
TURNKEY PROJECTS

09

Construction or Development Projects in which a Contractor is responsible for delivering a completed Project that is ready for use by the Client or End-User. In a Turnkey Arrangement, the Client only needs to “Turn-the-Key” to start using the facility as the Contractor has handled all aspects of the Project from Supply and Fabrication to Delivery, Installation & Commissioning.

ELDERS COLLIERY BMH UNDERGROUND ACCESS PROJECT





MAFUBE & PHOLA THICKENER INSTALLATION PROJECTS



Herewith a short video of another successful installation completed by J&L Lining and Construction. Biggest Bolted Thickener in the Southern Hemisphere. Lift: Bridge 48M Long - Weight 49 Ton.





FABRICATION

**STRUCTURAL STEEL
PLATEWORK
PIPING
GENERAL MANUFACTURING ETC.**





ERECTION OF STEELWORK

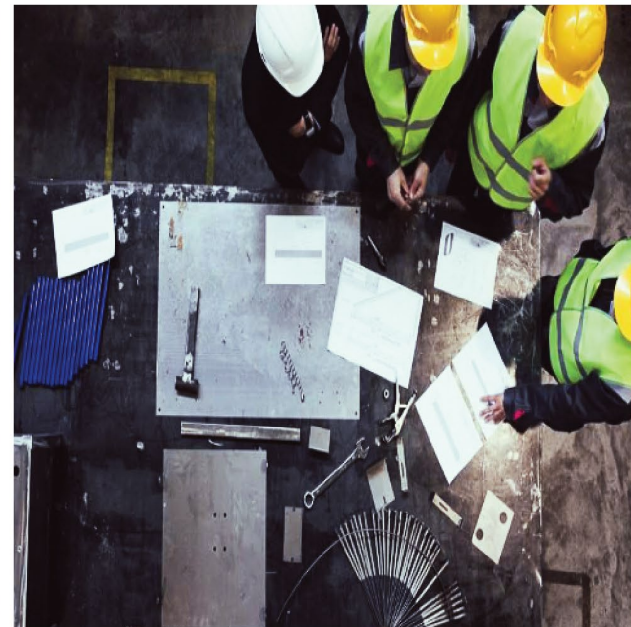
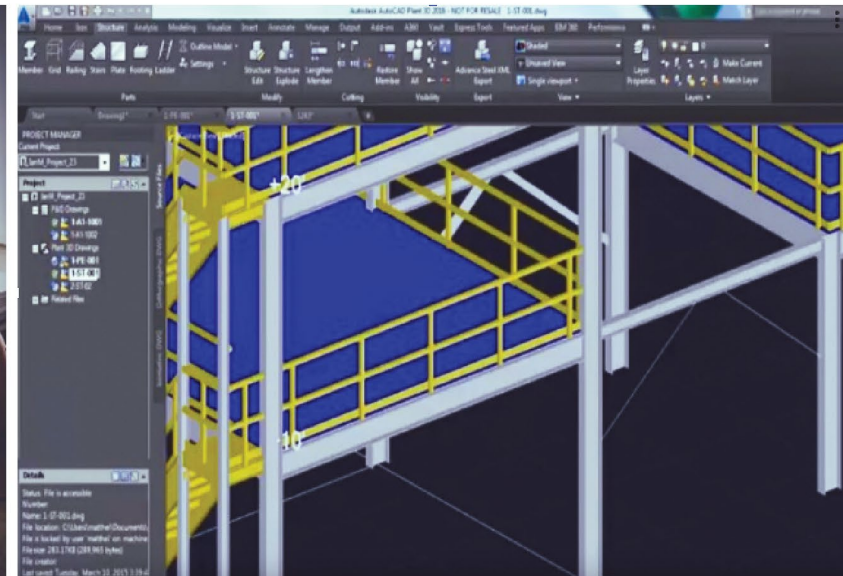
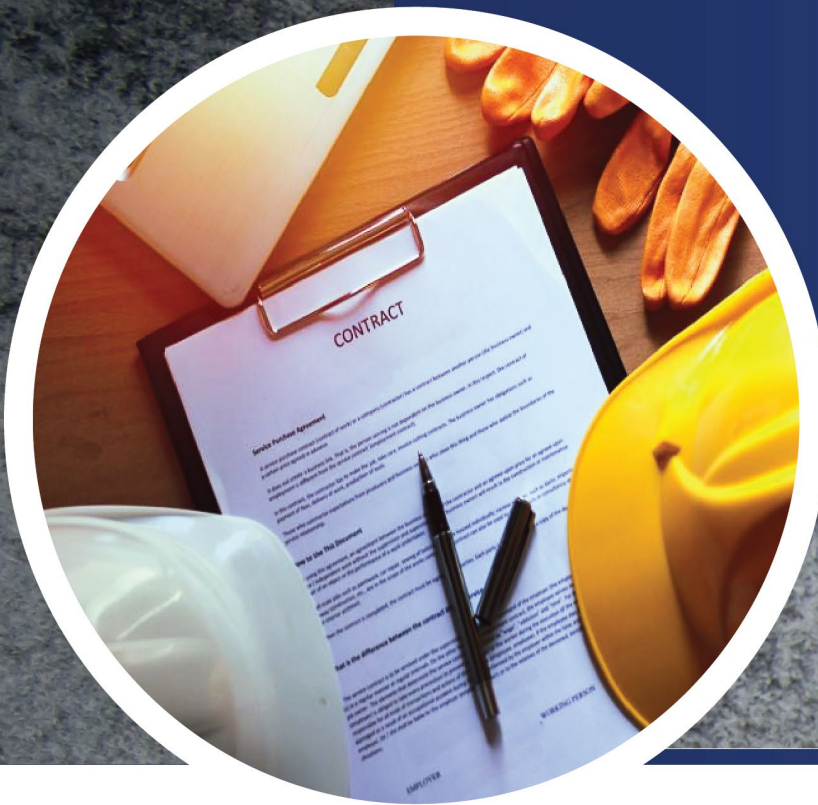
**STRUCTURAL STEEL, PLATEWORK
CONVEYOR STRUCTURES, PLANTS
PIPELINES, THICKENERS, BUILDINGS,
GENERAL MAINTENANCE ETC.**

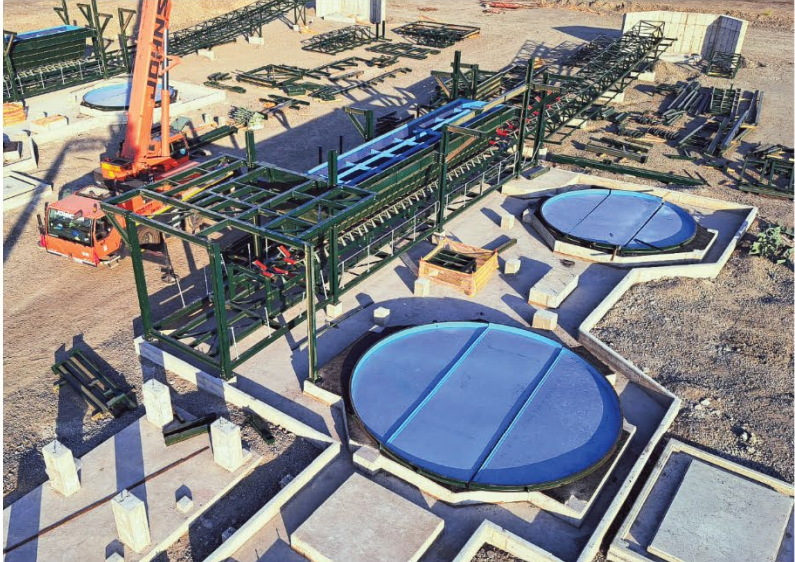




PROJECT MANAGEMENT

DIRECTING AND ORGANIZING EACH PART OF THE PROJECT LIFE CYCLE, FROM TENDER TO COMPLETION.





SAFETY & QUALITY CONTROL

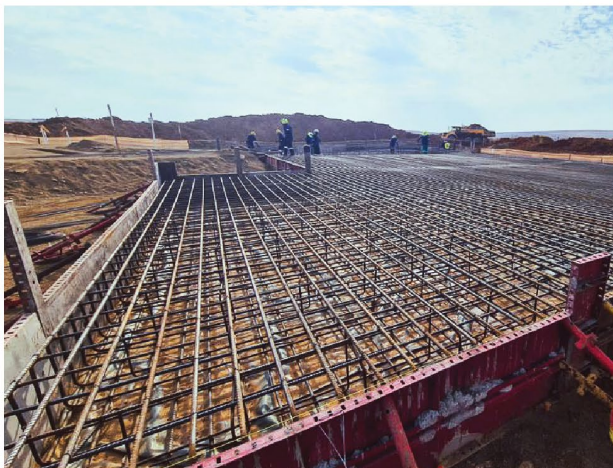
OUR SYSTEMATIC PROCESS THAT ENSURES PRODUCTS MEET DEFINED STANDARDS, SPECIFICATIONS, AND PERFORMANCE EXPECTATIONS.





CIVIL CONSTRUCTION

**EARTHWORKS
BASES, PLINTHS
FLOORS, BUND WALLS,
TRENCHES ETC.**

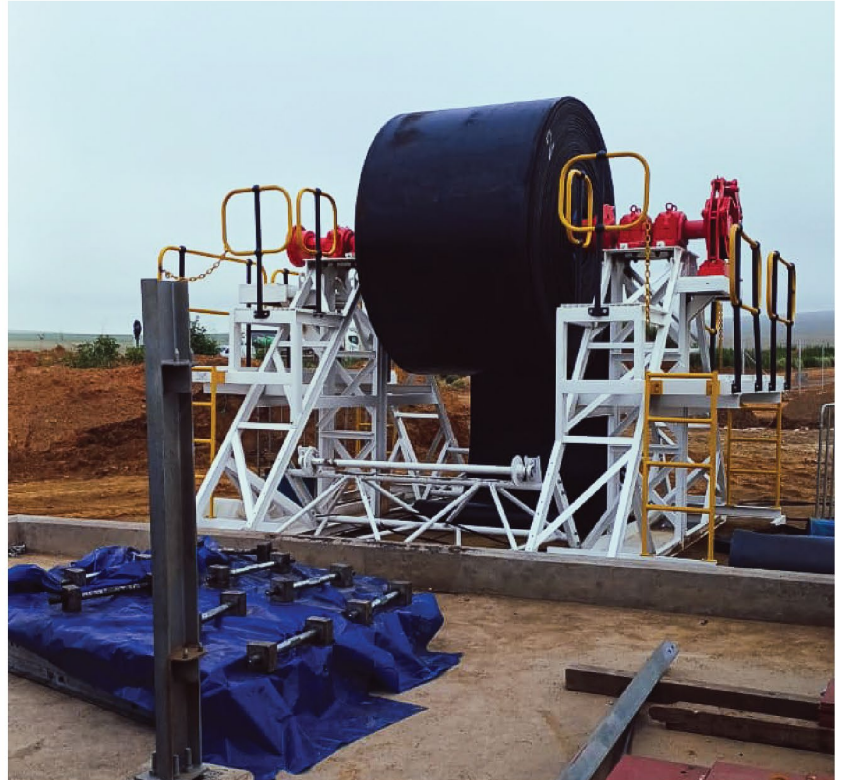
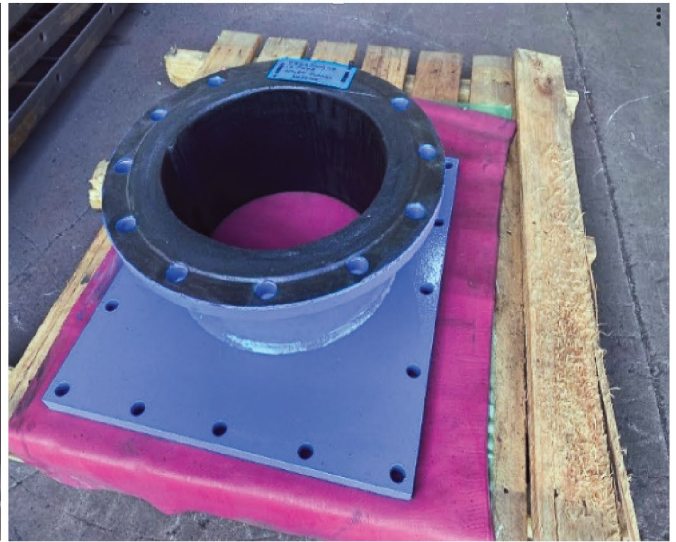
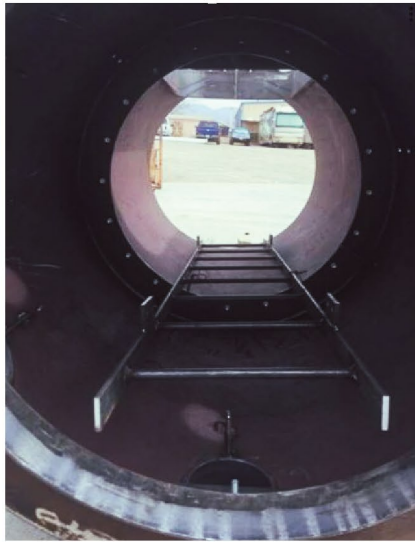
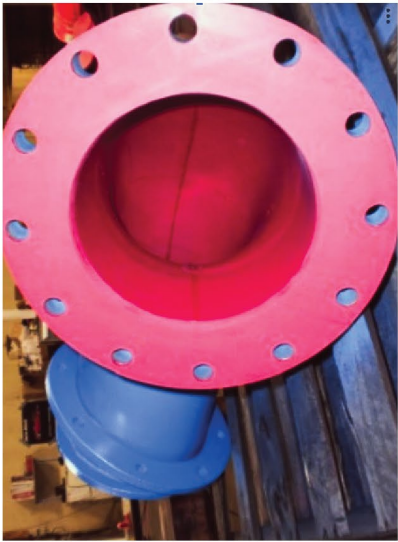
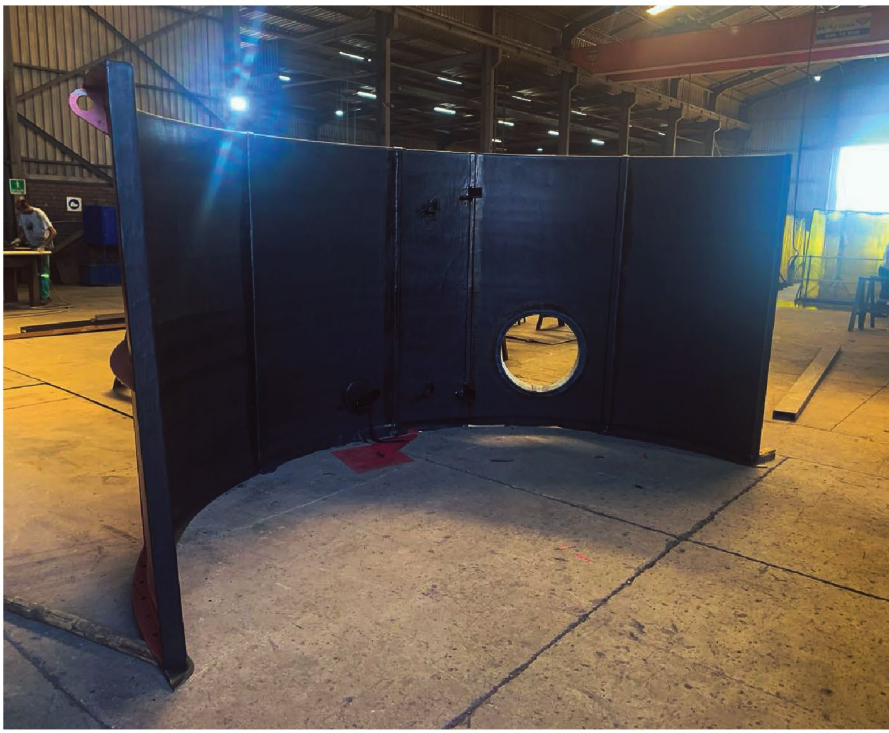




RUBBERLINING & CONVEYOR BELTING

RUBBERLINING OF TANKS,
CHUTES, LAUNDERS,
UNDERPANS, PIPES ETC.
BELT SUPPLY & INSTALLATION.





SANDBLASTING & CORROSION PROTECTION

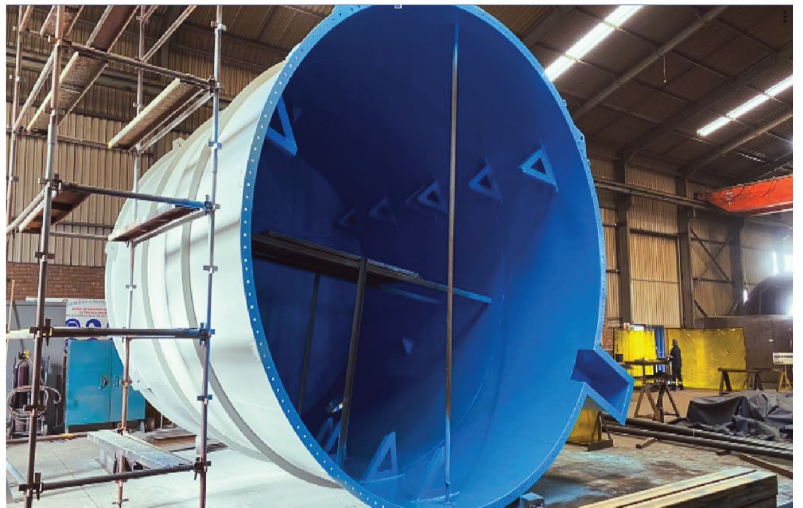
SANDBLASTING CLEARS MATERIAL SURFACE SO THAT PAINT AND OTHER COATING SYSTEMS CAN BE APPLIED FOR ULTIMATE PROTECTION.

J&L LINING OFFERS THE FOLLOWING COATING SYSTEMS:

PAINTING - CHECKED BY QUALIFIED COATING INSPECTORS WITH DETAILED DATA REPORTS

HOT DIP GALVANISING - GALVANISING UP TO 14M LONG







PROFILE CUTTING

LASER
PLASMA
FLAME CUTTING
FROM 3MM UP UNTIL 300MM





CONCLUSION



Our dedicated team is committed by a shared understanding and acceptance of our company VISION, powered by our MISSION and underpinned by our business VALUES.





CONTACT US



013 246 2888



3 Desi St, Industrial Area,
Middelburg, South Africa



www.jllining.co.za